



# Observations for a better world

**VAISALA**



**As our world faces pressing societal  
and environmental challenges...**

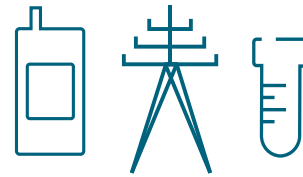
**...it's more important than ever  
to base decisions on accurate and  
reliable data.**

# Take action, find answers and remove doubts with our measurement solutions



## Weather and Environment

Serves selected environmental and weather-dependent markets where accurate, real-time, uninterrupted, and reliable information is essential to run efficient operations and make informed decisions.



## Industrial Measurements

Provides accurate and reliable measurement instruments and systems to optimize processes, improve efficiency and productivity, minimize energy consumption, and ensure product quality.

# Vaisala in numbers

Net sales  
in 2022  
**514.2 MEUR**

**12%**  
of net sales  
invested into R&D

**2,200+**  
employees  
worldwide

**25+** offices in  
**17** countries

**300+**  
product families

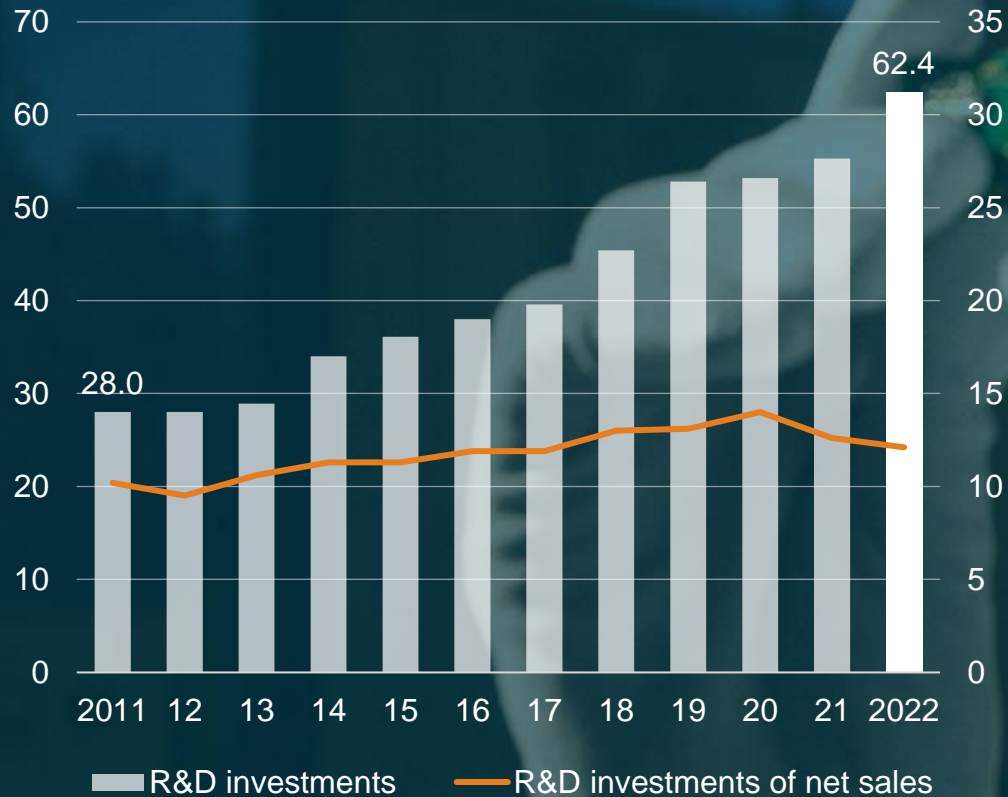
Business in over  
**150**  
countries

Employee  
engagement index  
**4.2/5**

**100%**  
renewable  
electricity

# Systematic technology and product development investments

MEUR

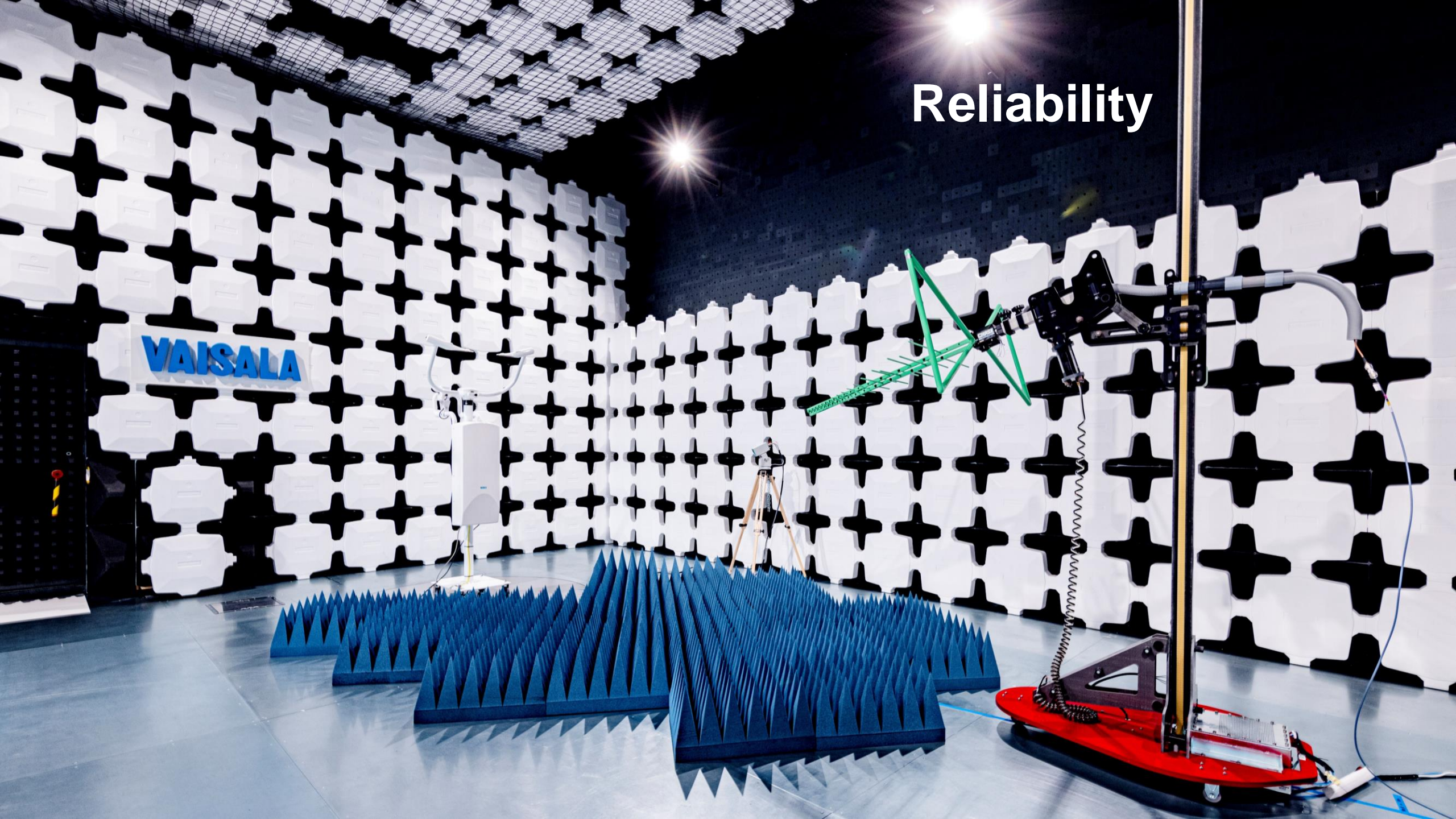


Science-based innovations are the core of Vaisala

# New R&D Building

- Home of over 300 Vaisala R&D specialists
- Space: 7,900 m<sup>2</sup>
- 37 custom-made laboratories
  - EMC lab
  - Rain tower & IP lab
  - Vibration laboratory
  - Environmental chambers
  - System testing laboratories

# Reliability



VAISALA



# Collaboration spaces



**Maximizing our positive handprint through strong  
commitment to sustainability**



# Maximizing our positive handprint through strong commitment to sustainability

## Sustainable solutions

- Reliable decisions
- Productivity
- Quality
- Better-informed societies
- Resource efficiency
- Safety

## Sustainable business practices

- Sustainable product design and long product life cycles
- Resource efficiency and use of renewable energy in our facilities
- Occupational health and safety
- Diversity and inclusiveness
- Managing human rights risks
- Zero tolerance towards corruption



Observations for  
a better world

**VAISALA**

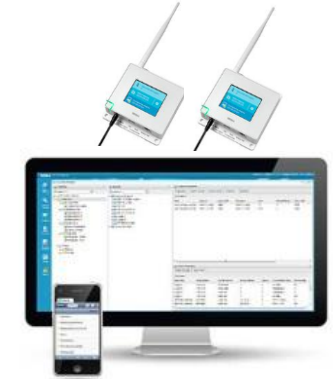
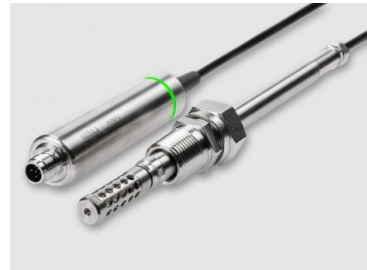
# Industrial Measurements Products

## Parameters

Humidity  
Dewpoint  
Temperature  
Pressure

Carbon dioxide  
Methane  
Hydrogen peroxide

Dissolved gases in oil  
Liquid concentration



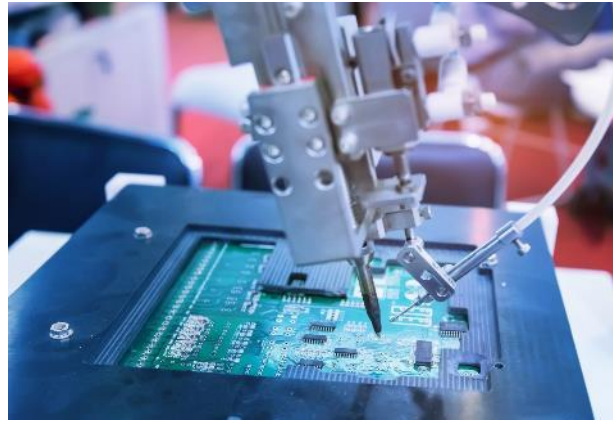
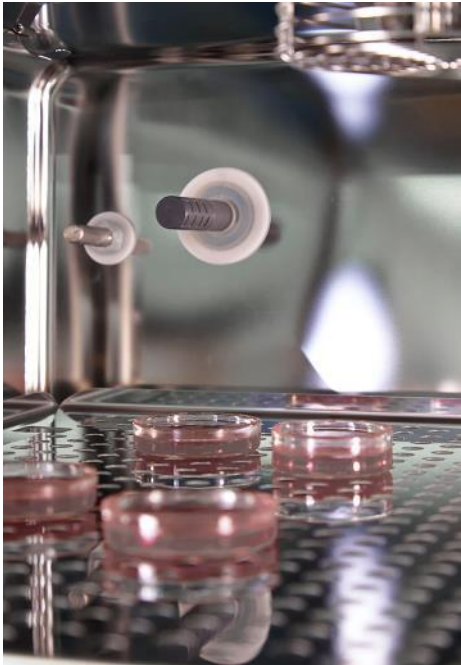
**Sensors  
Probes**

**Measurement  
instruments**

**Loggers  
Handhelds**

**Liquid process  
instruments**

**Monitoring  
systems**



# Serving a variety of industries and applications

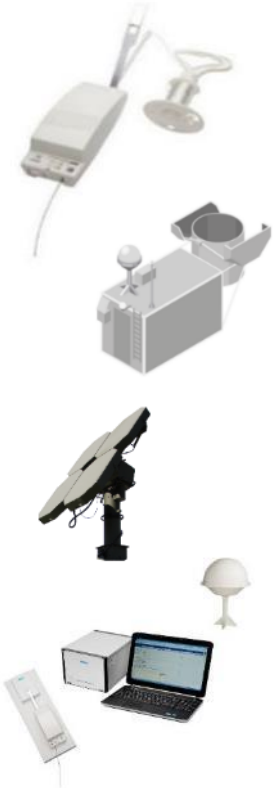
For example:

- Agriculture
- Automotive
- Battery manufacturing
- Biogas
- Building automation & indoor air quality
- Cleanrooms
- Compressed air
- Food & beverage
- Industrial drying e.g. paper
- Pharmaceutical
- Power
- Pulp & Paper
- Semiconductors

# Weather and Environment

## - Leadership with a broad product portfolio

Soundings



Pressure, wind, humidity, multiweather



Visibility, Present weather



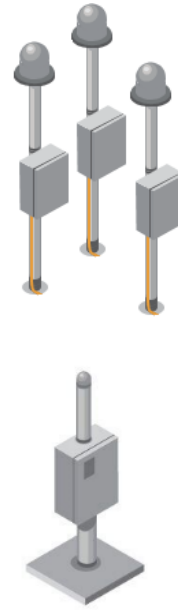
Ceilometers



Remote wind measurement



Lightning sensors



Road and aviation weather systems



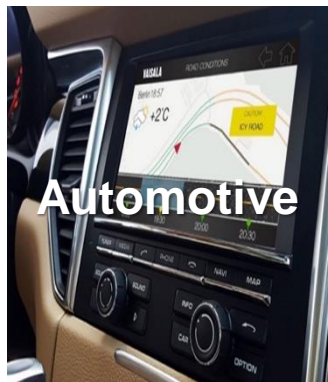
Weather radars



Air quality sensors



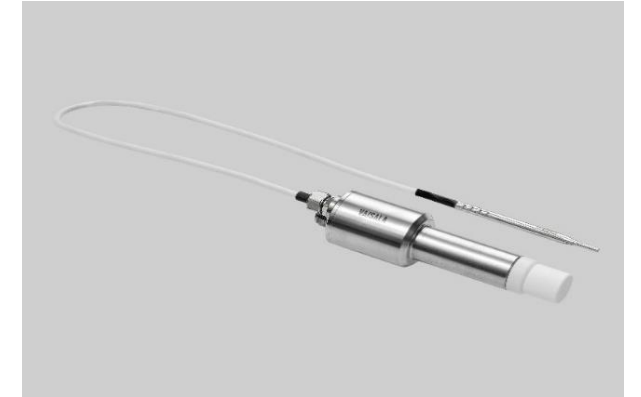
# Weather and Environment business



*Developers, long tail*



# Product and technology examples



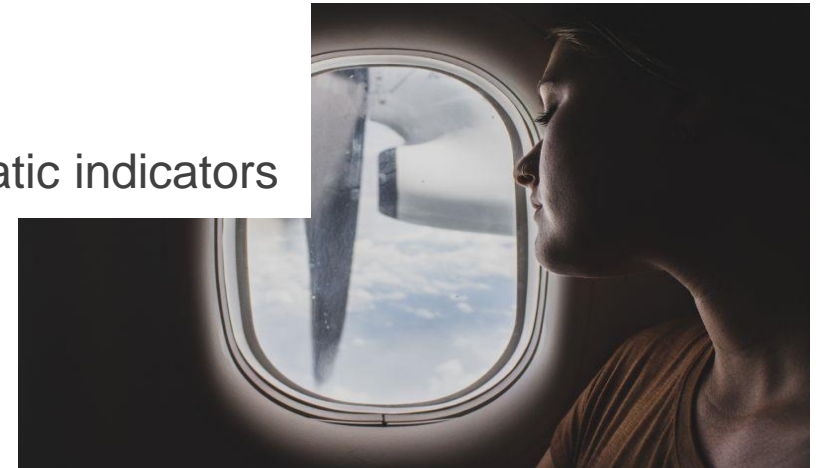
**VAISALA**

# How and Why H<sub>2</sub>O<sub>2</sub> is Used?



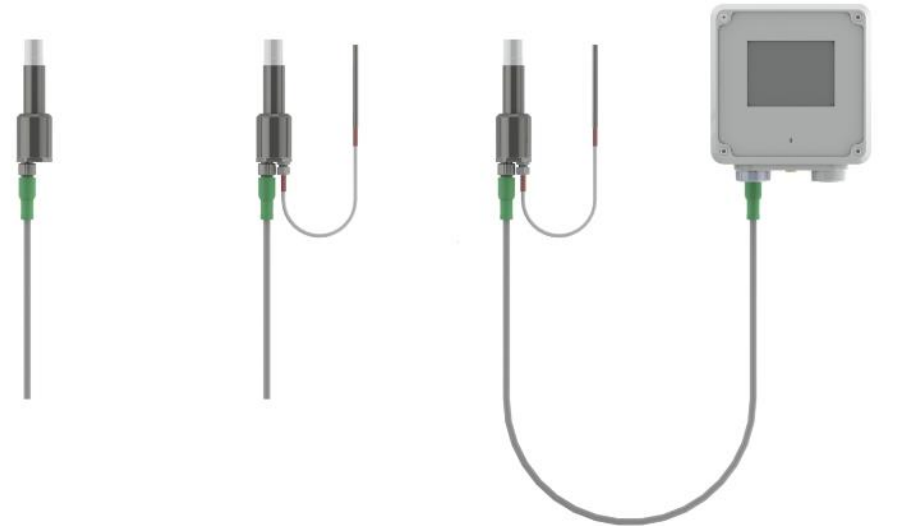
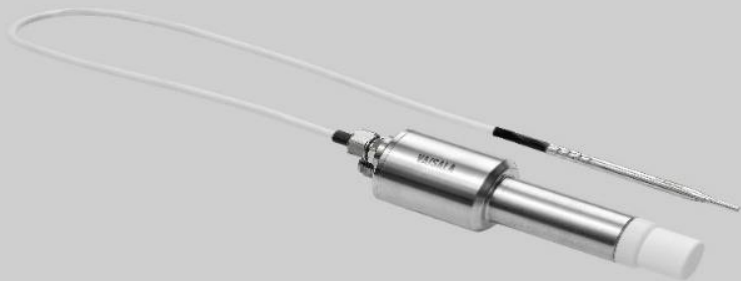
## Sterilization & bio-decontamination

- Guarantees that process works as planned
- Continuous measurement
- Decrease use of biological, chemical or enzymatic indicators



# HPP270 series

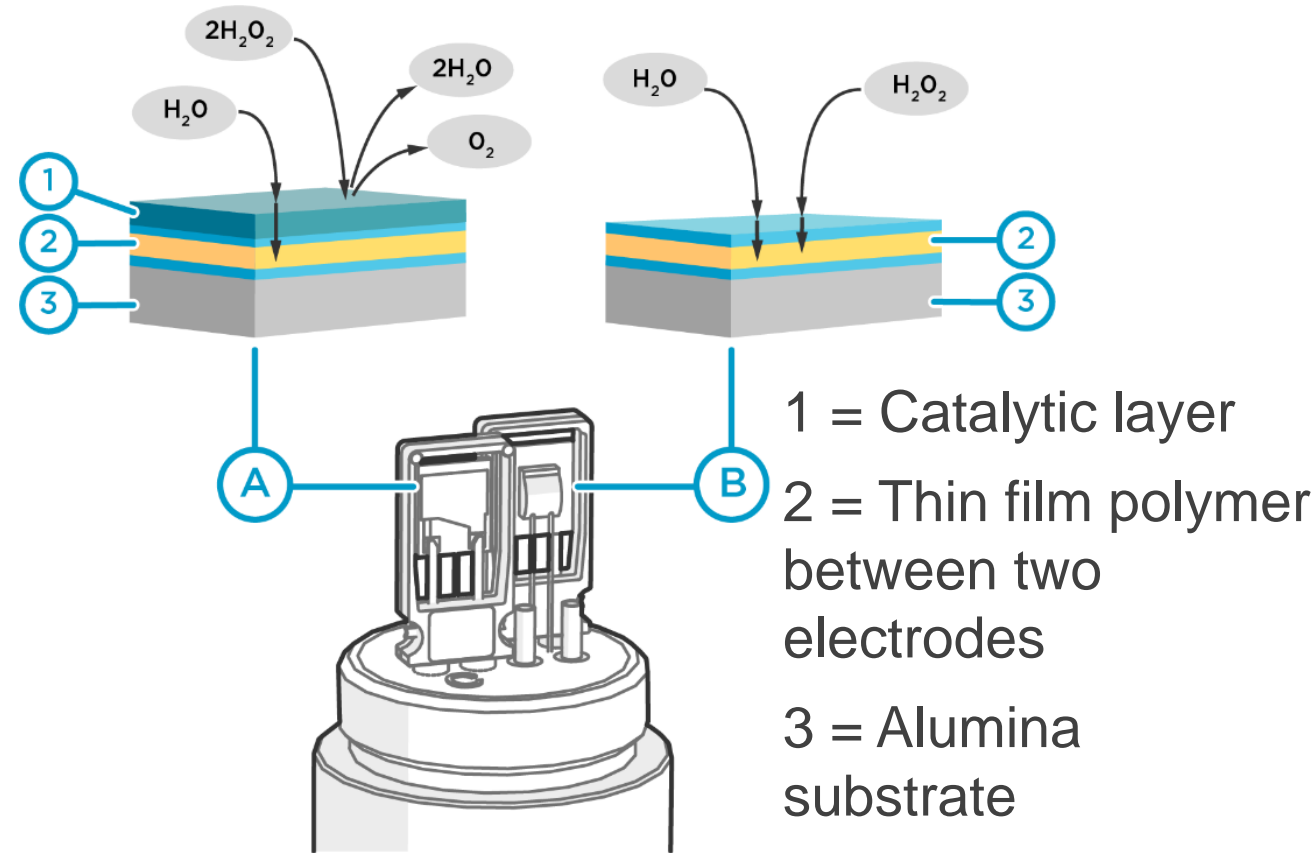
Capacitive thin-film polymer sensor  
PEROXCAP® measurement technology



# PEROXCAP®

## - Unique measurement principle

- Based on measuring two humidity HUMICAP® sensors
  - With (A) and
  - without (B) a catalytic layer

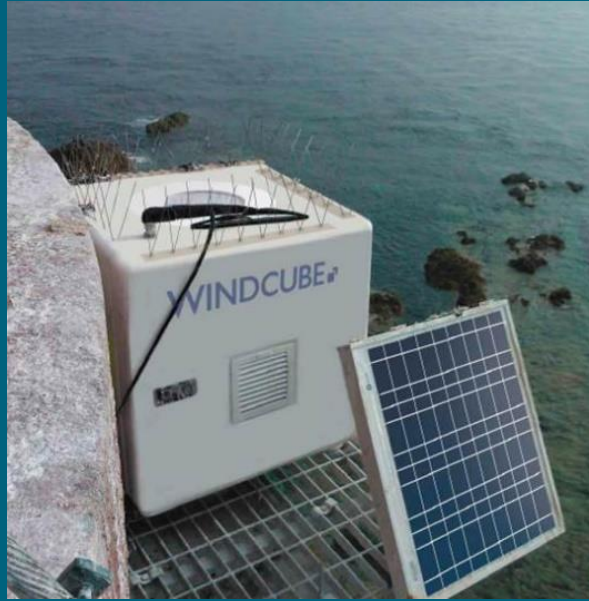


# WindCube®

- Wind lidar for vertical profiles



**VAISALA**



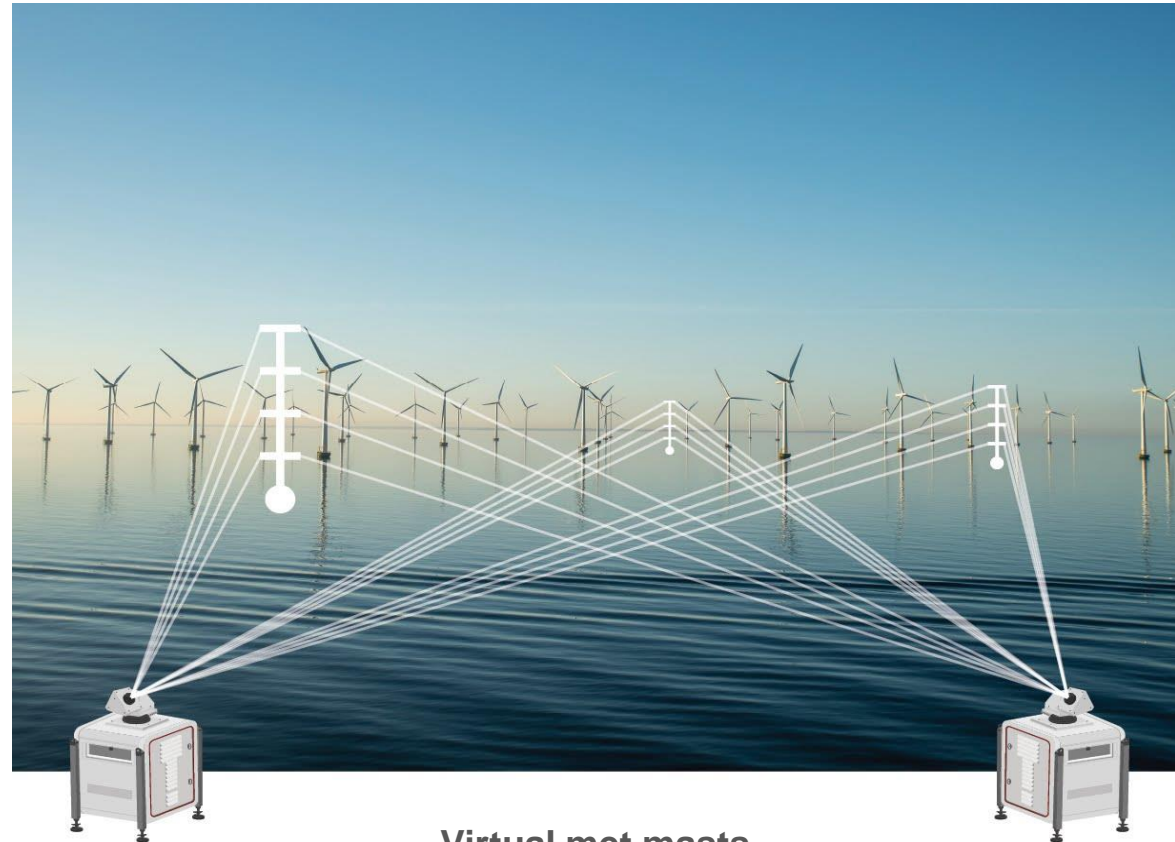
# Dual Scanning lidar: increasing acceptance

Large coverage to reduce vertical and horizontal uncertainties

- 5-10 virtual tower locations
- 3-5 heights
- 10 min – 1 hr averages

Fine assessment of turbulence intensity for turbine suitability

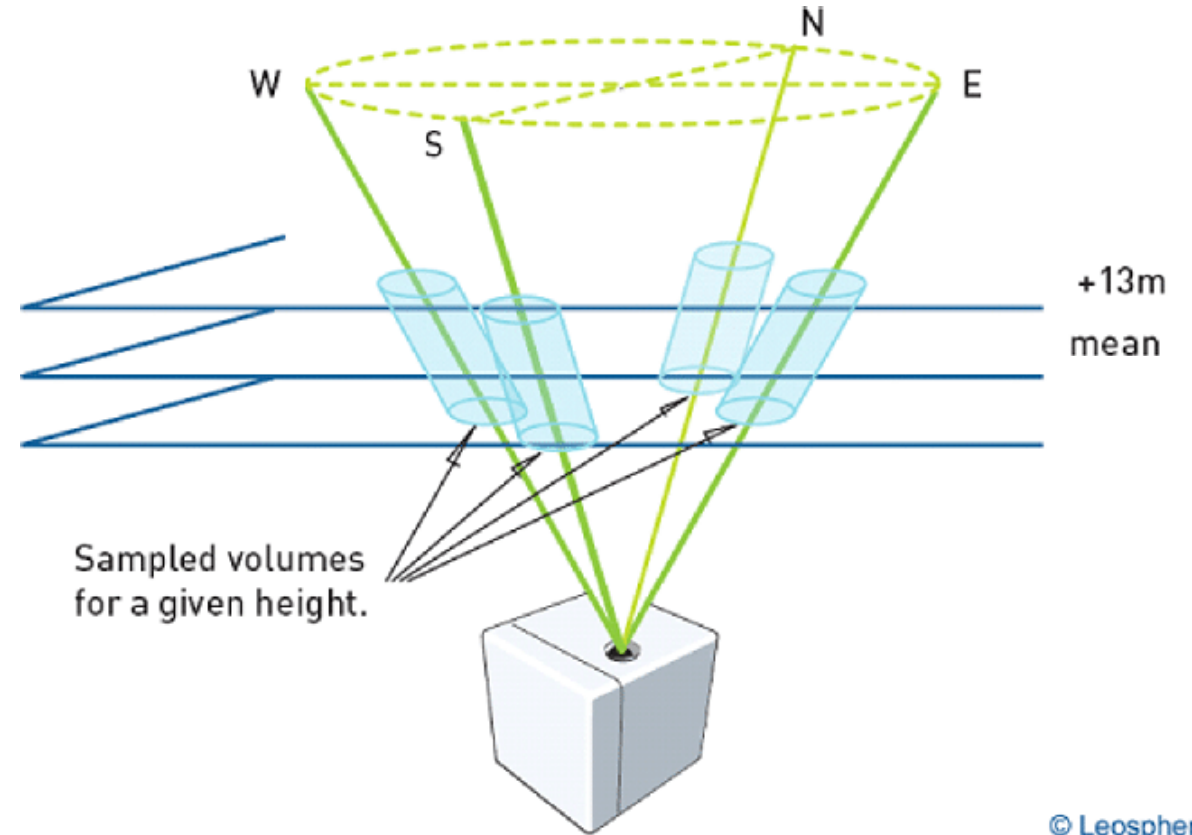
- 1-2 locations
- 1-2 heights
- High measurement rate



Virtual met masts

# Doppler wind lidar principle

- Doppler shift is measured from aerosol laser light scattering
- Optical coherent heterodyne measurement with pulsed narrow line laser
- 1 m/s is  $\sim 0.7\text{MHz}$  shift @  $200\text{THz}$  ( $1.5\ \mu\text{m}$ )





# RoadAI

## Pavement inspections and asset inventories

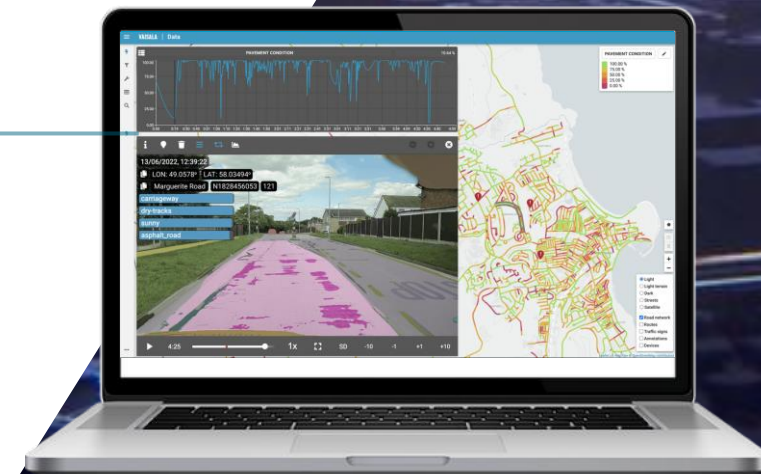
- RoadAI cloud software and API
- Computer vision-based pavement condition assessment platform for informed maintenance decisions using a smartphone
- Collect and maintain road asset inventories



AI Road Analysis

SMARTPHONE UI

Asset Management Tools

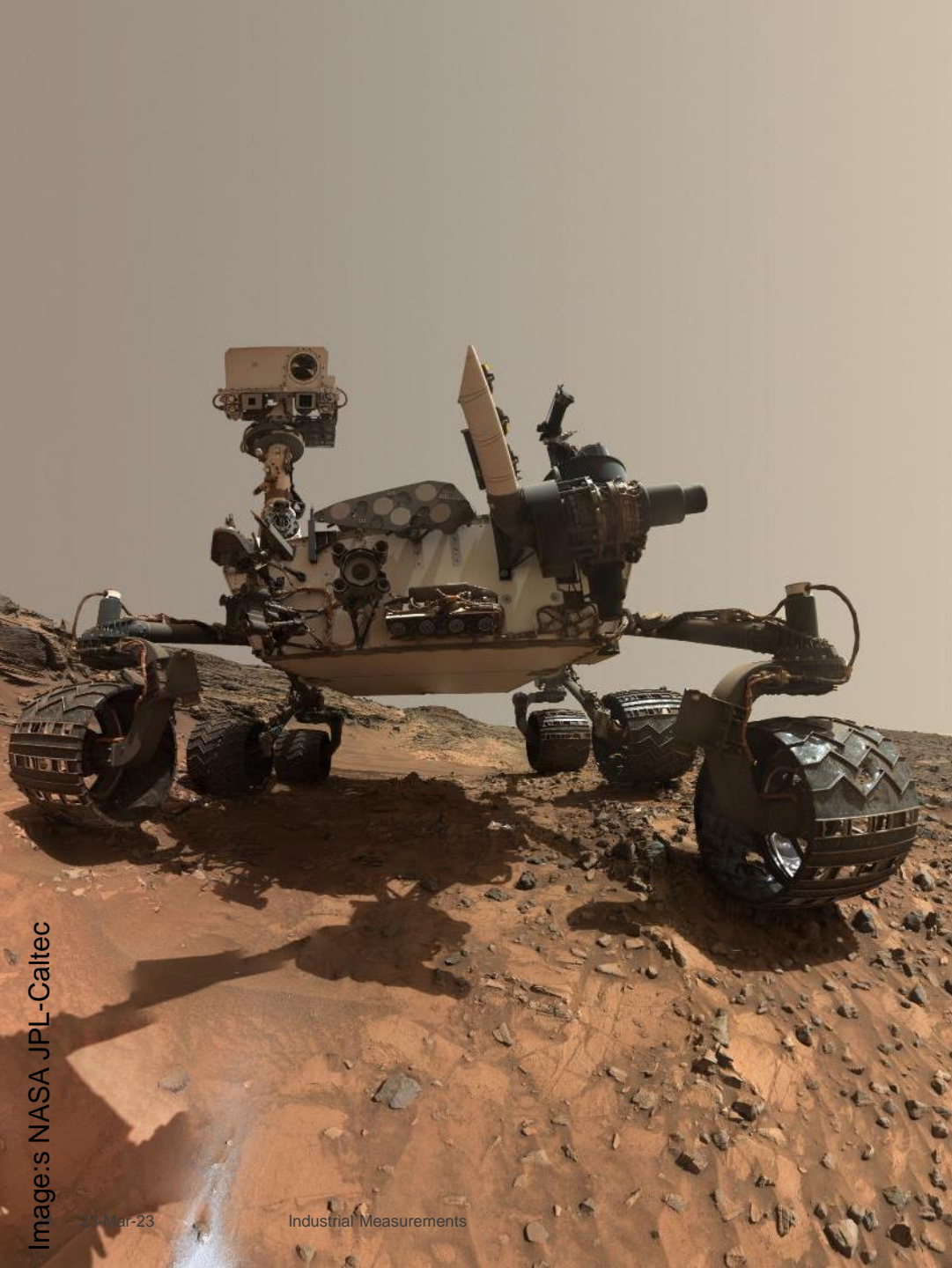


# Road condition reports 4x faster half the cost



# Fully automated and objective pavement assessment





**Thank you!**